

Control of Fertilizer spreader type

Every year your fertilizer spreader is spreading fertilizer valid many times the value of the spreader. The effect of bad maintenance, wrong settings or low quality of the fertilizer, is a lower yield.

Your spreader has to be maintained correctly, to do the perfect job in the field. The perfect job is defined by the right dosage, and the right placement of the fertilizer.

The following points have to be checked regularly:

Spreading:

1. Downshutes, should be undamaged.
2. Downshutes should be cleared of grown up fertilizer.
3. The distance fra the frame, to the opposite lower corner (A) see fig. 1. Has to be: The numbers to the left, is the scale figures on machinery from 1993 and newer)

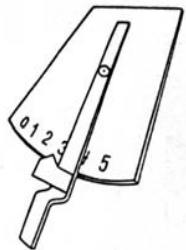
**All types B2 and B3, as well
B4 and B6 untill year. 1990**

- | | |
|-----|------------------------------|
| 2 | A = 155 mm at 12 m workwidth |
| 2 | A = 155 mm at 15 m workwidth |
| 2 | A = 155 mm at 16 m workwidth |
| 2 | A = 155 mm ar 18 m workwidth |
| 2 | A = 155 mm at 20 m workwidth |
| 3,5 | A = 170 mm at 24 m workwidth |
| 3,5 | A = 170 mm at 28 m workwidth |
| 4,0 | A=175 mm at 30 m workwidth |
| 4,0 | A=175 mm at 32 m workwidth |
| 5,0 | A=185 mm at 36 m workwidth |

**B4 / B6, year 1991 and newer
(sidejusterbart hjultræk)**

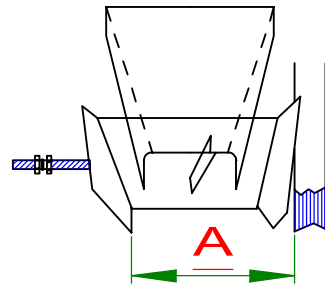
- | | |
|-----|-------------------------------|
| 2 | A = 205 mm ved 12 m workwidth |
| 2 | A = 205 mm ved 15 m workwidth |
| 2 | A = 205 mm ved 16 m workwidth |
| 2 | A = 205 mm ved 18 m workwidth |
| 2 | A = 205 mm ved 20 m workwidth |
| 3,5 | A = 220 mm ved 24 m workwidth |
| 3,5 | A = 220 mm ved 28 m workwidth |
| 4,0 | A = 225 mm ved 30 m workwidth |
| 4,0 | A = 225 mm ved 32 m workwidth |
| 5,0 | A = 235 mm ved 36 m workwidth |

A test can show other settings as optimal. Measuring is done with a tape measurer



1

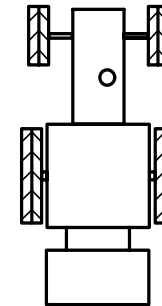
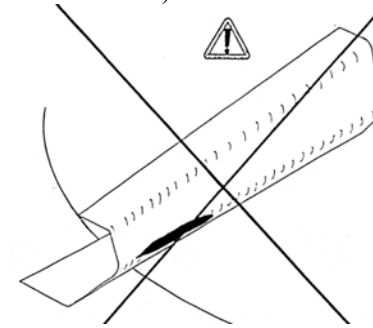
Central adjustable downshute, all spreaders from 1999 and newer



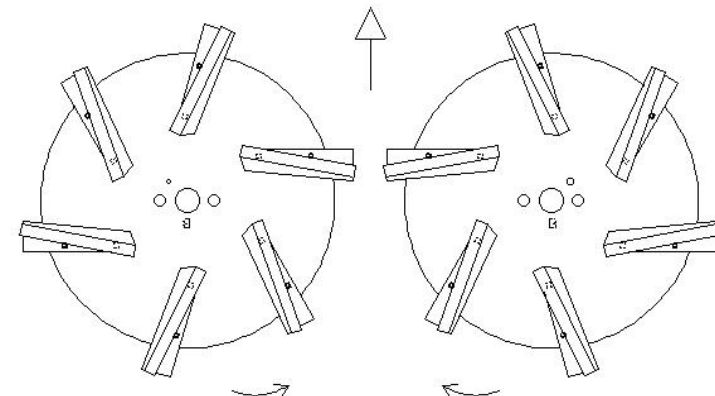
Adjustable downshute by bolt, all spreaders untill 1998

B2XL / B2ML / B3 / B4 / B6 / B8

4. Vanes has to be mounted correctly on the disc (fig 2)
5. Vanes must not be beded, and no holes must be worn.
6. The V-belts has to be thight. (Control: You should not be able to pull both discs in the same direction at the same time).



2



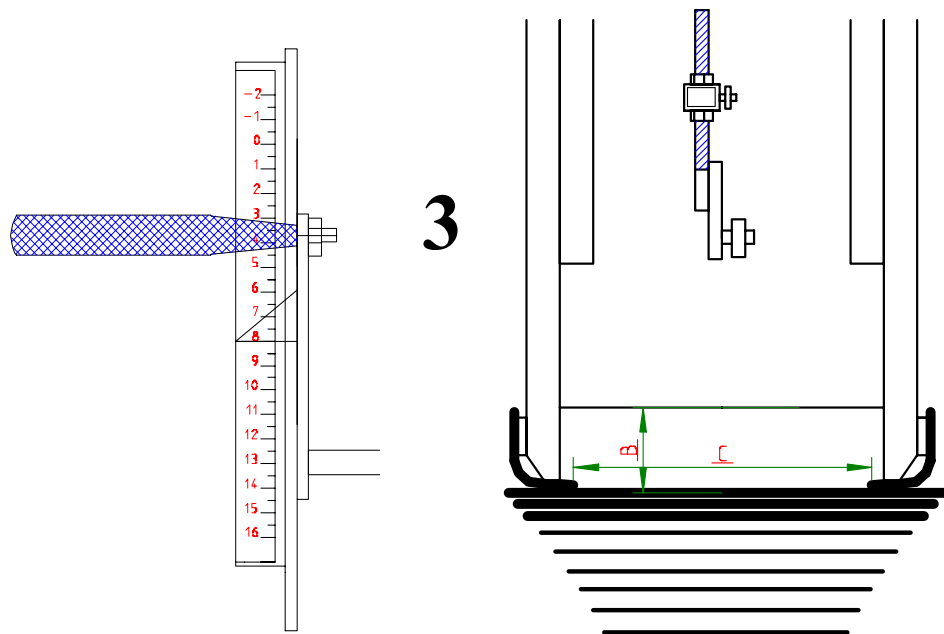
B. Dosage:

1. The belts has to be thight. They should be able to be pressed 5cm on the middle underneath the frame.
2. The belts can be uneven after to much greasing, this will give an uneven opening at the rear door, and result in an uneven dosage.

The rear doors, should have a distance to the floorbelt (B), at scale 8 of:
(fig 3. measure B):

Type B2 / B3 / B4
Type B6 / B8

B = 40 mm
B = 42 mm



The distance between the side rubber, in the door opening should be:
(fig 3. measure C):

Type B2 / B3
Type B4 / B6 / B8

C = 110 – 115 mm
C = 120 – 125 mm

Side 2

reading in field

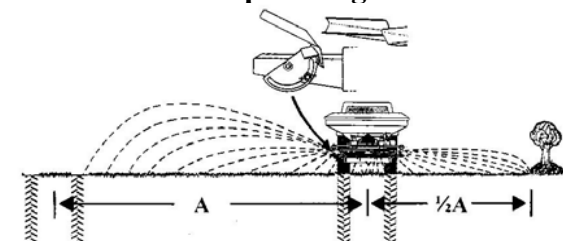
Headland spreading 12 – 16 m

A



12 m	2	500
15 m	2	700
16 m	2	700
18 m	2	800
20 m	2	800
24 m	3,5	900
28 m	3,5	1000
30 m	4,0	1000
32 m	4,0	1000
36 m	5,0	1000

Headland spreading 18 - 36 m



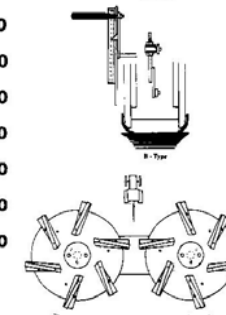
A



18 m	4	370	340
20 m	4	430	400
24 m	4,5	500	450
28 m	4,5		530
30 m	5		580
32 m	5		650
36 m	5		750

Dosering / Rate
Débit / Dosierung

- 10%



Bredal A/S Tlf. 75 89 51 77 Fax. 75 89 59 72
Internet: www.bredal.com E-mail: info@bredal.com